

2005 Annual Report



Mobile County Health Department
Major General William C. Gorgas Clinic

Our Mission

"The Mission of the Mobile County Health Department, is to promote, improve, and protect the health of Mobile County."

Our Vision

"The Vision of the Mobile County Health Department, is a healthy community."



*Accredited by the
Joint Commission on Accreditation
of Healthcare Organizations.*



Mobile County Health Department

Major General William C. Gorgas Clinic

251 N. BAYOU STREET P.O. BOX 2867 MOBILE, ALABAMA 36652-2867 (251) 690-8158 FAX (251) 432-7443

Bernard H. Eichold II, M.D., Dr.P.H., F.A.C.P.
Health Officer

BOARD OF HEALTH

Ted N. Catranis, M.D., F.A.C.O.G., Chairman
M. Craig Kleinmann, D.O.
Elizabeth A. Mancini, M.D.

Charles B. Rodning, M.D., Ph. D., F.I.C.S., F.A.C.S.
Juan F. Ronderos, M.D.
Raymond Broughton, M.D.
Juan H. Chastang, President, County Commission

I am pleased to present to you the 2005 edition of the Annual Report for the Mobile County Health Department. It is the mission of the Mobile County Health Department to promote, improve and protect the health of Mobile County under the guidance of the Board of Health. Within the guidance and under the direction of the Board of Health, Mobile County Health Department's economic impact on the Mobile County community during 2005 was \$34,354,022. In this report each department has provided highlights of their services and statistical information about relevant public health activities.

During 2005, the Mobile County Health Department responded to tropical storms Arlene and Cindy, and hurricanes Dennis and Katrina. Hurricane Katrina brought an unparalleled devastation to the Gulf Coast and created an unexpected population increase to Mobile County. The Mobile County Health Department staff responded to this devastation in an unprecedented way involving administrative, environmental, clerical as well as medical staff. It is especially noteworthy that the Health Department was fully operational two days post-hurricane. As coastal cleanup progressed, the Health Department acted to obtain a court order assisting the United States Coast Guard in the removal of over sixty beached vessels in Bayou La Batre.

As Health Officer of the Mobile County Health Department, I am proud of the services delivered through our local public health system and acknowledge the professionals in public health who provide care and comfort to the citizens of Mobile County. It is only through the dedication of our professionals and staff that we are able to respond to the needs of this community in an expeditious manner.

Ted N. Catranis, M.D., F.A.C.O.G.
Chairman, Board of Health

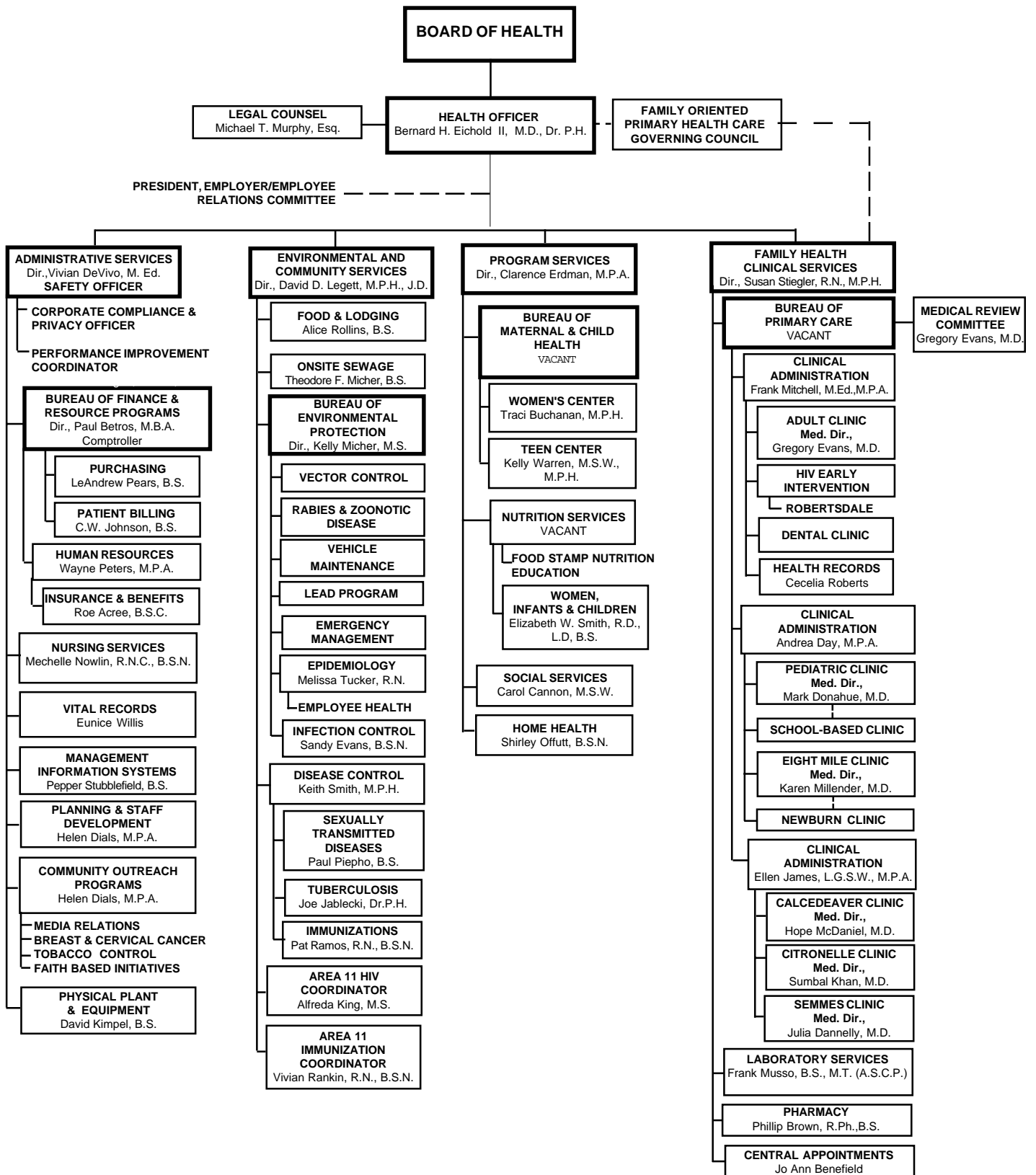
Bernard H. Eichold II, M.D., Dr. P.H., F.A.C.P.
Health Officer



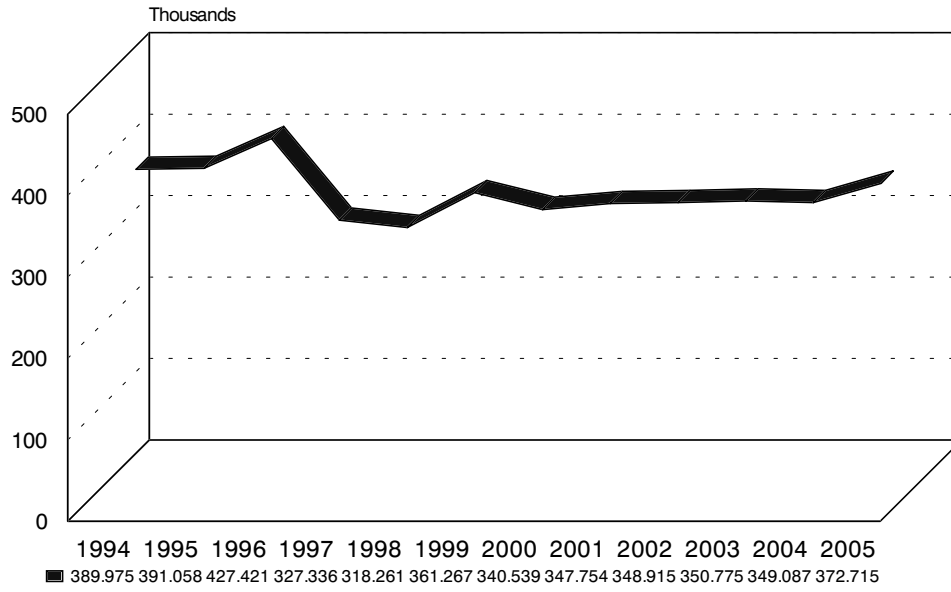
*The Mobile County Health Department has earned
the Joint Commission's Gold Seal of Approval.*

2005
Mobile County Board of Health

Jack A. DiPalma, M.D.	Chairman
Thomas C. McGee, M.D.	Member
Ted N. Catranis, M.D., F.A.C.O.G.	Member
Lorie G. Fleck, M.D., F.A.C.S.	Member
M. Graig Kleinmann, D.O.	Member
Keith M. Ramsey, M.D.	Member
Mike Dean, <i>President,</i> <i>Mobile County Commission</i>	Member



Total Contacts Graph



2005 Highlights

- The Semmes Clinic held its grand opening in November of 2005 and was awarded \$50,000 by the Mobile County Commission toward the purchase of dental equipment. This new clinic provided another subset of Mobile County residents with access to health services. Located in the Northwest Mobile town of Semmes, the Semmes Clinic recorded over 2,700 patient visits during 2005.
- On February 1, 2005 Alabama Medicaid implemented a new Patient 1st Program which required each recipient to choose a primary care provider from a list of participating providers. The Family Oriented Primary Health Care Clinic on Bayou Street and the satellite clinics were enrolled as participating providers.
- The nursing staff was asked to respond to a chemical spill, tropical storm and two hurricanes in 2005. New guidelines were implemented to include mid-level providers at the medical needs shelter. Non-medical personnel have also been added to assist the nursing staff at both the medical needs shelter and mass shelters.
- The agency became compliant with the HIPAA Security standards by April 2005.
- The Board of Health adopted rules for the Construction, Operation and Maintenance of Swimming Pools and Spas in October, which addressed the growing concern over the transmission of waterborne diseases.
- The existing ordinance governing food handlers in Mobile County was revised in October to include responsible alcohol service as part of the Food Handler Program and to include requirements for a Certified Food Safety Manager Course that became mandatory for all establishment managers responsible for the preparation of potentially hazardous foods.
- After forming a committee with the Mobile Home Builders Association and the Mobile Realtors Association, the Onsite Division adopted special Onsite Sewage Rules & Regulations for property development in the Converse Lake Watershed. These rules & regulations were established to protect the drinking water supply for the city of Mobile..
- Public health professionals responded to Hurricane Katrina by staffing mass care and medical needs shelters; triaging at local emergency rooms and shelters; manning the Emergency Operations Center and the Mobile County Health Department Command Center; coordinating medical responses in the community; conducting special immunization clinics; coordinating vector control activities and distributing mosquito repellants and larvicides; investigating animal bites; inspecting food and lodging establishments; and issuing public advisories.
- The National Incident Command Structure (NIMS) was adopted to manage emergency situations.
- Epidemiology staff supported two CDC investigative teams on one outbreak and one public health issue (carbon monoxide poisoning).
- The Women, Infants & Children (WIC) Program opened a new service site in Semmes, Alabama in conjunction with the Bureau of Primary Care. This clinic provided a new access point in a rural western portion of the county. Hispanic migrant farm workers and their families were one of the at-risk populations targeted by the new clinic. This clinic reached a population in need of WIC benefits.
- WIC evacuees from Louisiana and Mississippi were enrolled in Mobile County for a three month period post Hurricane Katrina. The WIC program allowed Alabama grocery stores to accept Louisiana food instruments. Ready-to-feed infant formula was available to evacuees who needed assistance.

Administrative Services

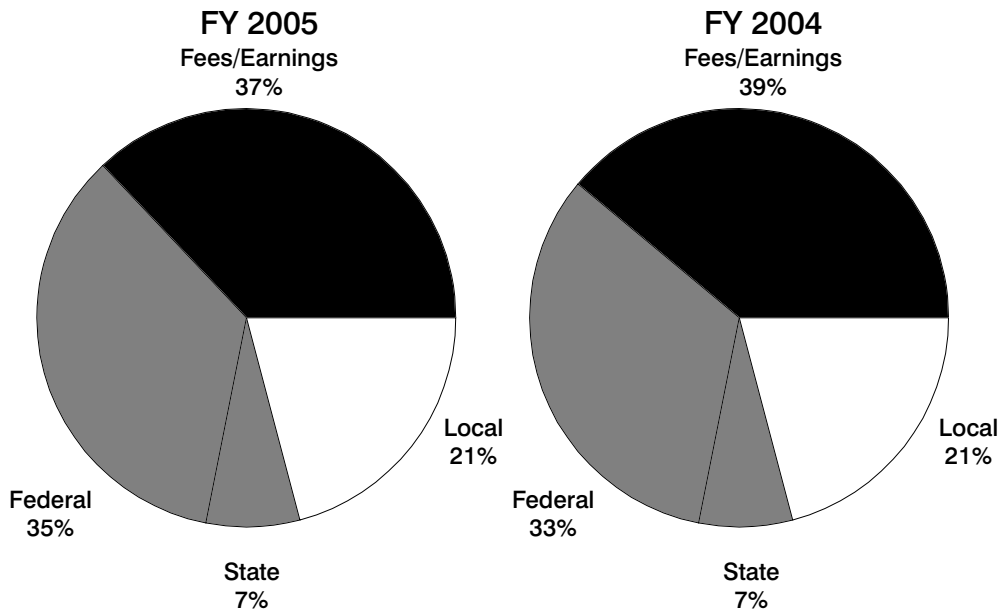
With renewed focus on operations support, Administrative Services was able to provide essential functions as delineated below. Internal support areas included fiscal: procurement of goods and services; the management of the work force to include the employee benefits plan and staff development; nursing services; information technology support; and facilities and equipment management. Community services included the issuance of vital records, media relations, breast and cervical cancer screening programs, tobacco control, and faith based initiatives.

- In 2005, the Mobile County Health Department Laboratory was again successfully surveyed and granted JCAHO accreditation.
- Total revenues for the fiscal year ending September 30, 2005 increased 8.4% from the previous fiscal year and expenditures decreased 6.1% during the same time period. Funding from all sources increased for the fiscal year with federal funds increasing by 14.5%, local funds increasing by 7.1%, fees and earnings increasing by 4.4% and state funds increasing by 3.8%.
- Purchasing received 18 bids for the year.
- The Patient Billing department filed approximately 99,300 claims during the year. Claims to Medicaid, Medicare, All Kids, Blue Cross and Blue Shields and various commercial payers were billed electronically.
- On February 1, 2005 Alabama Medicaid implemented a new Patient 1st Program which required each recipient to choose a primary care provider from a list of participating providers. The Family Oriented Primary Health Care Clinic on Bayou Street and the satellite clinics were enrolled as participating providers.
- The nursing staff was asked to respond to a chemical spill, tropical storm and two hurricanes in 2005. New guidelines were implemented to include mid-level providers at the medical needs shelter. Non-medical personnel were also added to assist the nursing staff at both the medical needs shelter and mass shelters.
- Heart disease continued to be the number one cause of death in Mobile County, followed by cancer, stroke, accidents, and chronic lower respiratory disease.
- The issuance of certified copies of Vital Records totaled 24,250 births, 26,725 deaths (4,166 of which were processed through the department), 467 marriages, and 108 divorces. A total of 51,550 certified copies were issued for 2004.
- The agency became compliant with the HIPAA Security standards by April 2005.
- A total of 36 employees participated in emergency response on-line training for national incident management system (NIMS) and national response plan (NRP). New employee orientation classes were presented to 84 new employees.
- Two hundred and nine news releases were released to the media and 297 media inquires were addressed.
- The Health Partnership Coalition (a health and faith-based partnership) was awarded \$5,000 by the Alabama Covering Kids & Family Grant to establish health education and screening programs with faith organizations within Mobile County. The Leadership Mobile Health Services Team (an affiliate of Mobile United) raised \$6,200 for HPC to purchase medical equipment for on-site community health screenings.

**SOURCES OF REVENUE
FY 2005 AND FY 2004**

SOURCE	FY 2005	FY 2004
LOCAL	\$ 5,323,196	\$ 4,969,265
STATE	1,725,126	1,622,098
FEDERAL	8,626,446	7,532,531
FEES/EARNINGS	9,264,367	8,877,449
TOTALS	24,939,135	23,001,343

**SOURCES OF REVENUE
FY 2005 AND FY 2004**



STATEMENT OF REVENUES AND EXPENDITURES
FISCAL YEAR ENDING SEPTEMBER 30, 2005 AND SEPTEMBER 30, 2004

REVENUES

Appropriations	FY 2005	FY 2004
Local Government		
County of Mobile	\$ 799,686	\$ 799,686
City of Mobile	600,000	600,000
Other Municipalities	126,322	132,041
State of Alabama	489,404	489,404
Other Appropriations	0	0
TOTAL APPROPRIATIONS	\$ 2,015,412	\$ 2,021,131

Grants

Eliminating Disparities	\$ 1,499,482	\$ 1,624,906
Alabama Safe Kids	50,000	49,375
Diabetic State Funding	10,000	8,468
Incarcerated Youth- AIDS Ed.	49,477	42,929
Food Stamp Nutrition Education	87,016	67,576
Primary Care	3,231,499	2,076,998
Family Planning	425,472	381,603
Maternity	456,673	506,303
Women, Infants & Children(WIC)	1,590,418	1,409,860
HIV/AIDS	732,770	768,845
School-based Clinic	147,491	201,238
Children's Trust Fund	57,920	65,729
Cancer Screening	64,539	60,978
Teens Against Tobacco Use	11,780	0
VIBES	10,000	0
Unwed Pregnancy Prevention	0	18,579
Even Start	0	53,079
FUTURES Grant	0	246,649
Tobacco Control	52,379	48,429
Tobacco-Free-Youth Empowered	30,000	30,000
ALLKids	85,035	32,557
Bioterrorism	336,974	351,121
Ryan White Title II	18,102	10,002
Breast and Cervical Cancer	38,667	85,876
Alabama Kids and Families	57,493	33,336
Family Planning-Special Incentive	27,172	7,500
Southern Community Cohort Study	52,835	0
TOTAL GRANTS	\$ 9,123,194	\$ 8,262,936

Other

Ad Valorem Taxes	\$ 3,153,107	\$ 2,891,775
Oil & Gas Severance Tax	633,206	543,643
Medicaid/Medicare	6,435,314	5,917,832
Reimbursement (Fed., State, Other)	738,974	648,938
Clinic Fees (Private Pay, Other Ins.)	1,230,527	1,332,984
Local Fees, Permits, Misc.	1,259,913	1,144,407
Refunds and Interest	2000,590	105,594
Sale of Fixed Assets	10,531	9,760
Rent	127,492	120,223
Donations	10,875	2,120
TOTAL OTHER	\$ 13,800,529	\$ 12,717,276

TOTAL REVENUES **\$ 24,939,135** **\$ 23,001,343**

EXPENDITURES

Personnel Costs	\$ 17,376,886	\$ 17,330,238
Contract Services	1,890,928	2,140,452
Travel	199,246	182,667
Equipment	347,578	454,105
Supplies and Other	3,190,651	3,291,054
Land and Buildings	495,873	1,649,059

TOTAL EXPENDITURES **\$ 23,501,162** **\$ 25,047,575**

Environmental And Community Services

Environmental and Community Services promoted community sanitation standards and enforced applicable public health rules and regulations. These initiatives were carried out through the activities of the Onsite Sewage, Food & Lodging, Vector Control, Childhood Lead Prevention and Zoonotic Disease programs. As a lead agency in response to a terrorist threat or attack, the Health Department's Environmental Services expanded efforts in staff selection and training and worked to identify strengths and weaknesses in its emergency response plans.

- The department responded to Hurricane Katrina by visiting all establishments in the county and overseeing the destruction of potentially hazardous foods. Two environmentalist accompanied a local caterer, at his request, to New Orleans to train disaster relief workers in proper food handling. Shelters in Mobile County were inspected first on a daily basis and then twice weekly.
- County Commission approved increased fees for all services offered by the Department of Food and Lodging in May.
- The Department of Food and Lodging began writing Rules for the Construction, Operation and Maintenance of Day Care Centers.
- The Board of Health adopted rules for the Construction, Operation and Maintenance of Swimming Pools and Spas in October, which addressed the growing concern over the transmission of waterborne diseases.
- The existing ordinance governing food handlers in Mobile County was revised to include responsible alcohol service as part of the Food Handler Program and to include requirements for a mandatory Certified Food Safety Manager Course for all establishment managers responsible for the preparation of potentially hazardous foods.
- The Food Handler Course and the Certified Food Safety Manager Course were made available through the internet.
- After forming a committee with the Mobile Home Builders Association and the Mobile Realtors Association, the Onsite Division adopted special Onsite Sewage Rules & Regulations for property development in the Converse Lake Watershed to maintain the watershed's high water quality standards.
- A marked increase in the usage of advanced treatment technology for onsite sewage disposal systems was seen throughout Mobile County.
- In May, the Mobile County Health Department hosted the Strategic National Stockpile (SNS) formal training exercise demonstration of a mock biological incident involving mass exposure. Nearly 200 Mobile County Health Department employees participated in the exercise to demonstrate the capability for providing prophylaxis to 400,000 people in a 48-hour period.
- The Mobile County Health Department responded to tropical storms Arlene and Cindy, and hurricanes Dennis and Katrina. Staff responded to Hurricane Katrina in an unprecedented way by manning mass care and medical needs shelters; assisting with triage at local emergency rooms and shelters; manning the Emergency Operations Center and the Mobile County Health Department Command Center; coordinating medical responses in the community; conducting special immunization clinics; coordinating vector control activities and distributing mosquito repellants and larvicides; investigating animal bites; inspecting food and lodging establishments; and issuing public advisories. The staff clocked over 2,500 over-time hours. The National Incident Command Structure (NIMS) was adopted to manage emergency situations.
- The Epidemiology Department continued to work with Centers for Disease Control and

FOOD AND LODGING

FOOD	
Permitted or Permits Pending	2,053
Inspections	10,000
Plan Reviews	435
MILK AND FROZEN DESSERTS	
Milk Plants Permitted	4
Dairies Permitted	1
Inspections	31
Samples	347
Water Samples	11
SANITATION COURSES	
Trainees	17,706
Off Premises Courses	164
On Premises Courses	751
SPECIAL EVENTS	
Events	32
Inspections	238
GENERAL SANITATION INSPECTIONS	
Hotels/Motels	86
Schools	240
Detention Centers	33
Child Day Care	429
Camp Inspections	2
TOTAL	790
SWIMMING POOL	
Inspections	55
Complaints	10
COMPLAINTS	
Foodborne Illness	148
Regular	298
Hotels/Motels	12
WATER SAMPLES	
	45
BODY ART	
Inspections	16
Complaints	1
TOTAL INSPECTIONS	11,599

ONSITE DIVISION

SUBDIVISIONS	
Approved	47
Subdivision Lot Inspections	1,722
Individual Lot Inspections	630
PLUMBING	
Permits Issued	1,634
Inspections	3,954
SEPTIC TANK	
Permits Issued	1,355
Inspections	1,156
System Verifications or Certifications	17
Complaint Investigations	1,025
Advanced Treatment System Approvals	126

the National Electronic Disease Surveillance System (NEDSS), becoming the first in the country to initiate external reporting.

- Epidemiology staff supported two CDC investigative teams on one outbreak and one public health issue (carbon monoxide poisoning).
- The Refugee Preventive Health Grant was used to provide preventive care for refugees in the area. Preventive care included immunizations, primary care services, dental care and eye exams. In 2005, the Mobile County Health Department screened a total of 103 refugee patients from Africa, Cuba, Iraq, Liberia, Burma, and Turkish nations from the Republic of Russia.
- The Maternal Hepatitis B Program followed 20 pregnant women who were found to be Hepatitis B carriers. Household and sexual contacts were offered free testing and Hepatitis B immunizations, with priority given to newborn infant to ensure they were properly immunized within 12 hours of birth. During the year, 21 babies born to Hepatitis B mothers were monitored by the program and all were immunized. All babies responded to the vaccine. Infants infected with the Hepatitis B virus at birth have an 80 to 90 percent chance of being chronic carriers. Early immunization is a priority for the Maternal Hepatitis B Program.
- The Childhood Lead Poisoning Prevention Program screened 1,076 children from Mobile County in 2005. Thirty three new cases of lead poisoned children were identified with blood lead levels of 10mcg/dl and above. There were 21 active cases tracked.
- Lead Inspector/Risk Assessor Environmentalist performed 12 environmental inspections on homes associated with children with elevated blood lead levels. Additionally the

SELECTED COMMUNICABLE DISEASES REPORTED 2000-2005

DISEASES	2005	2004	2003	2002	2001	2000
AIDS	73	68	75	66	76	76
Campylobacter	13	28	31	39	29	21
Encephalitis (Primary)	0	13	6	8	1	0
Giardiasis	27	18	14	20	33	33
Gonorrhea	1,147	890	958	823	1,225	1,542
H. Influenzae, invasive disease	0	0	1	4	3	0
Hepatitis						
A	3	2	1	0	3	14
B	13	19	14	16	16	11
Non A/Non B	0	0	0	3	2	1
HIV Infections	68	60	80	76	96	82
Lead Poisoning	41	56	59	58	58	96
Legionellosis	0	1	0	0	0	0
Lyme	0	0	2	6	7	2
Malaria	1	1	4	0	0	2
Measles						
Rubella	0	0	0	0	0	0
Rubeola	0	0	0	0	0	0
Meningitis						
Meningococcal	2	0	3	2	2	7
Other	0	1	0	0	0	1
Salmonella	105	116	114	109	102	104
Shigella	3	13	33	478	17	7
Syphilis	10	6	8	4	12	14
Tetanus	0	0	0	0	0	0
Tuberculosis	27	12	29	19	29	26
Vibriosis	3	6	1	4	9	4
Whooping Cough (Pertussis)	6	1	2	1	4	1

RABIES REPORT

Vaccinations in Mobile County	58,000
Potential Exposures Investigated	914
Animals Confined	469
Animals Tested	210
Human Treatments	16

VECTOR CONTROL

MOSQUITO CONTROL ACTIVITIES

Mosquito Services Requests Investigated/Treated	1,684
Mosquito And Arboviral Surveillance	
Mosquito Species Identified	29
Adult Mosquitoes Identified (permanent sites)	1,344
Adult Mosquitoes Identified (variable sites)	17,111
Mosquito Pools Tested	229
Mosquitoes Tested	7,068
Mosquito Pools Positive	0
Larval Samples Identified	2,519
Sentinel Sera-samples Tested	746
Positive Sentinel Samples (titers >40)	
WNV	2
EEE	8
Number WNV+ Dead Birds	1
Total Dead Birds Submitted	37
Larviciding	
Larviciding Applications	6,204
Gallons of Liquid and Diluents	3,384
Pounds of Granular Larvicide	7,380
Number of Briquets	65,200
Ground Adulticiding	
Adulticiding Runs	101
Gal. of Adulticide & Diluents	6,291
Aerial Adulticiding	
Number of Flights	5
Acres Treated	930,592

RODENT CONTROL ACTIVITIES

Service Requests Received	1,328
Residential Inspections	7,847
Pounds of Rodenticide Used	2,075

environmentalist conducted 21 inspections for the Mobile Housing Board Rehabilitation Program and 4 inspections for the Mobile Community Action (Bridge Program) for homes built before 1978. Inspections were also conducted for the Refugee Program and the Leap Program (application process for Bay Area Women Coalition).

- The number of rabies exposures investigated in 2005 was 914 compared to 882 for 2004. Dogs and cats remained the most common cause of potential rabies exposures. Bites and scratches from wild animals were managed with the highest priority. Cats and dogs accounted for 98 percent of the exposures while bats, raccoons, and other animals accounted for the remaining 2 percent. Over ninety percent of all reported bites were followed to completion.
- Sixteen people were treated for rabies exposure, or 2 percent of all exposures investigated, requiring treatment at a cost of nearly \$32,000. Two bats from Mobile County tested positive with the presence of rabies virus in 2005. No confirmed human cases were noted.
- Eight positive sero-conversions for Eastern equine encephalitis and 2 positive sero-conversions for West Nile virus were noted in sentinel chickens from three different sites. No positive mosquitoes were noted.
- One hundred twenty-five dead bird reports were recorded in Mobile County and of these 37 dead birds were tested for West Nile virus using the Vec-test with one positive result.
- Hurricane damage to homes further increased the potential for mosquitoes to come into contact with human hosts as windows and screens were missing and many families were left homeless, forcing them to live in mass shelters or tents in many cases. To help reduce the risk of disease transmission, a repellent and larviciding give-away campaign was initiated by the Alabama Department of Public Health in coordination with the Mobile County Health Department. Thousands of cans of repellents and larviciding doughnuts were provided to the citizens of Mobile County free of charge. FEMA assistance provided aerial adulticiding to nearly one million acres to combat adult mosquitoes throughout the county.
- HIV Intervention received funding from Alabama Department of Public Health for the ninth consecutive year ensuring the continuation of a peer-led HIV risk reduction program for incarcerated youth, at the James T. Strickland Youth Center. This program was developed and implemented to offer confined juveniles an ongoing comprehensive and credible program of interactive HIV prevention education to include skills building, HIV testing, counseling, reference materials and prevention resources.
- HIV Intervention activities were conducted to educate the community at health fairs, churches, drug treatment centers, street outreach, gay bars and various other community organizations. Over 6,000 people were educated or tested through these activities.
- The Sexually Transmitted Disease (STD) Clinic recorded 9,444 medical patient evaluations and treatments. Disease Intervention Specialists completed over 5,000 field investigations. Additionally, collaborative efforts were initiated with the newly formed Mobile Area Pride (MAP) in an effort to offer testing and education to high-risk

HIV ANTIBODY TESTING

CLINIC	NO. TESTED	NO. POSITIVE
TB	132	0
Women's Center	3,367	5
STD	4,731	32
TOTAL	8,230	37

AIDS CASES

	Number of AIDS Cases	Deceased	No. HIV Positive
2005	70	16	68
2004	73	15	61
2003	75	25	64
2002	65	21	74
2001	76	24	86
2000	76	17	63
Total	435	118 (27%)	416

SEXUALLY TRANSMITTED DISEASES 2000-2005

YEAR	2005	2004	2003	2002	2001	2000
Early, Primary & Secondary Syphilis	***11	***7	**8	2	4	11
Late Syphilis	***11	***1	***2	2	7	3
Gonorrhea	1,667	1,386	1,100	983	1,672	1,541
PPNG & TRNG	0	0	0	0	0	0
Chlamydia	2,035	939	1,512	1,359	1,825	1,347

*PPNG: Penicillinase-producing Neisseria gonorrhoeae

*TRNG: Tetracycline-resistant Neisseria gonorrhoeae

**Data based on STD-MIS printout

***Data based on review of STD Case Log

NEW TUBERCULOSIS CASES AND DEATHS 2000-2005

YEAR	NEW CASES	CASE RATE*	DEATHS
2005	27	7.5	0
2004	13	3.6	1
2003	29	8.1	0
2002	19	5.4	1
2001	29	8.0	0
2000	26	7.1	0

*Per 100,000 population

populations. Outreach was also established with the states HIV Peer Mentor personnel in an effort focused at testing in high morbidity areas with the assistance of community members familiar with their particular area.

- Mobile County reported 27 confirmed active cases of tuberculosis (TB) in 2005 as compared to thirteen confirmed active cases in 2004. This represents a 107.7 percent increase. Tuberculosis morbidity was markedly low in 2004.

- There were two large scale tuberculosis (TB) outbreak investigations conducted in Mobile County with 183 exposed individuals screened for TB infection. There were eighteen active TB cases in the open case register for 2005.

- Immunizations increased for 2005 largely due to an influx of people displaced by Hurricane Katrina. Immunization staff collaborated with the Mobile County Public School nurses to raise the compliance level of school-age children.

IMMUNIZATION REPORT 2005 & 2004

VACCINE	AMOUNT			
	2005		2004	
	PED	ADULT	PED	ADULT
Diphtheria/Tetanus (DT)	0	0	9	0
Diphtheria/Tetanus/acellular Pertussis (DTaP)	5,635	0	3,705	0
Diphtheria/Tetanus/acellular Pertussis - Haemophilus b Conjugate (DTaP/Hib)	759	0	507	0
Diphtheria/Tetanus/acellular Pertussis - Haemophilus b Conjugate - Polio Vaccine,Injectable (DTaP/Hib/IPV)	1,142	0	900	0
Diphtheria/Tetanus/Pertussis (DTP)	0	0	17	0
Diphtheria/Tetanus/Pertussis - Haemophilus b Conjugate (DTP/Hib)	0	0	76	0
Encephalitis	0	0	0	0
German Measles (GM)	0	0	0	0
Haemophilus b Conjugate (Hibor HbOC)	5,061	0	2,555	0
Hepatitis A B Combo	23	132	11	462
Hepatitis-B/Haemophilus b Conjugate (HepB-Hib)	217	0	0	462
Hepatitis A - Adult	0	1,024	0	353
Hepatitis A - Ped.	182	0	125	0
Hepatitis B - Adult	0	868	0	602
Hepatitis B Immune Globulin (HepB-IG)	0	0	1	0
Hepatitis B - Ped.	5,554	0	4,107	0
Influenza	2,361	13,944	452	14,952
Polio Vaccine,Injectable (IPV)	5,610	1,863	3,943	147
Immune Serum Globulin (ISG A)	1	1	0	2
Lyme	0	0	0	0
Meningococcal Polysaccharide	220	105	152	102
Measles, Mumps, Rubella (MMR)	4,762	0	2,955	264
Measles, Rubella (MR)	0	0	5	0
Oral Polio Vaccine (OPV)	0	0	0	0
Prevnar (PCV)	0	0	2,264	0
Pneumococcal Polysaccharide	5	270	13	99
Rabies	2	0	0	8
Small Pox	0	0	0	0
Tetanus/Diphtheria (Td)	3,707	1,245	3,126	667
Typhoid, Injectable	53	423	73	329
Varicella	3,983	121	2,443	117
Yellow Fever	15	140	17	141
SUBTOTAL	39,292	20,136	27,456	18,259
TOTAL	59,428		45,715	

Program Services

The departments under the direction of Program Services provided the essential preventive health and ancillary programs necessary to operate a public health system. Program Services was composed of Home Health, Nutrition Services, Social Services, the TEEN Center, and the Women's Center.

- In 2005, 7,041 patients received family planning services including annual exams, contraceptive supplies and care coordination. Of the 7,041 served, over 80 percent were below 150 percent of the federal poverty level. Over half (66.3%) of those served were insured through public health insurance including Plan First while 24 percent had no public or private health insurance coverage. Over 13,000 family planning clinical encounters were completed.
- The Women's Center completed over 6,500 maternity care encounters. Care coordinators enrolled 619 patients in Maternity Care of Mobile or MOM Care (Alabama Medicaid Maternity Care Program) while USA physicians delivered 622 infants that received prenatal care at the Women's Center. Of those enrolled in MOM Care at the Women's Center, 387 had the first prenatal visit during the first trimester. At delivery, 400 patients had 7 or more prenatal care visits.
- Hospital and home visits were made to MOM Care patients following delivery in order to provide family planning counseling and follow-up.
- The home visits nurses received referrals from various MOM Care providers and completed home visits within 60 days of the delivery date. In 2005, the home visit nurses received 2,009 referrals and completed 1230 home visits.
- In 2005, Case Management, the entry point for clients, received 399 referrals from internal and external sources. Referral sources consisted of community-based organizations, Department of Human Resources, hospitals, juvenile justice system, private physicians, relatives/ friends/ parents, schools, TEEN Center staff and the Health Department's Women's Center. During the reporting period, Case Management assessed and made service referrals for 224 pregnant clients, 34 postpartum clients and 212 infants. Forty-nine percent of the referrals were received from community agencies, schools and/ or providers.
- Family Support services were provided to 280 families. At the close of 2005, the Family Support Workers had made 3,024 home visits to pregnant and parenting teens and their babies.
- Fifty-one HealthyStart clients received mental health services. Clients needing more in-depth assessment and/ or treatment were referred to the University of South Alabama, Department of Psychiatry. Four hundred one individual counseling sessions were recorded.
- The Fatherhood Program, a program to educate and empower young men to take more responsibility and be better fathers, served 54 young men.
- Clients enhanced their education and life skills by participation in the GED Preparation Program and Career Center. One hundred twenty-six adolescents were actively enrolled in the GED program, while there were 1,822 visits to the Career Center. Health Education managed to present 493 sessions in 38 schools to 10,639 children in Mobile County during 2005. Important topics included, but were not limited to, Anger Management, Violence Prevention, STD/ HIV prevention and Self-Esteem Building.
- Students Working against Tobacco (SWAT) began at Murphy High School 4 years ago

FAMILY PLANNING

Family Planning visits	14,737
Unduplicated patients	7,041

MATERNITY PROGRAM UTILIZATION

Total number of encounters	6,500
Number of patients enrolled	619

WIC PARTICIPANT CASELOAD

Category	Monthly Average	Annual Visits	Percent
WOMEN	2,696	32,356	25%
INFANTS	3,377	40,527	32%
CHILDREN	4,576	54,916	43%
TOTAL	10,649	127,799	100%

WIC VOUCHER DOLLARS SPENT IN MOBILE COUNTY

Category	Amount	Cost for Patient per month
WOMEN	\$ 1,682,512	\$ 52.00
INFANTS	5,222,714	128.87
CHILDREN	2,509,661	45.70
TOTAL	\$ 9,414,887	

NUTRITION EDUCATION CONTACTS Alabama Cooperative Extension Services Grant

	Number of Food Stamp Recipients	Other
Direct	4,596	876
Indirect	5,816	18
TOTAL	10,412	894

with a grant from the Alabama Department of Public Health. Now in its fourth year, the SWAT program has grown to include 150 students from four area schools. SWAT visited 52 schools and made 337 presentations which reached 6,966 students in grades 4-6. The SWAT mission is to "protect youth from tobacco use and exposure to secondhand smoke."

- The Alabama Baby Coalition (Fetal and Infant Mortality Review) has enjoyed a year of active participation from over 70 community maternal and child health professionals. Almost all (98%) fetal and infant deaths for 2004 were reviewed; the overwhelming majority of cases continue to relate to preconception health problems (tobacco use, obesity, chronic illness, STD's and other infections) and infant health (especially sleep associated deaths such as SIDS and accidental suffocation).
- Discussions have been underway to identify ways to improve pre and inter conception healthcare among women, especially those with barriers to access such care. In addition, as almost 25 percent of our infant deaths were sleep associated and most of these felt to be preventable, a large focus of the Coalition's efforts for 2005-06 is community education on safe sleep. To this end, a brochure, safe sleep poster, and PowerPoint presentation have been developed and are being used to educate new parents, grandparents, and health and child care professionals about the dangers of unsafe sleep environments and other risks. Legislative efforts are also underway to introduce a bill mandating safe sleep education to new parents prior to hospital discharge.
- The Women, Infants & Children (WIC) Program opened a new clinic in Semmes, Alabama in conjunction with the Bureau of Primary Care. This clinic provides a new access point in a rural western portion of the county. Hispanic migrant farm workers and their families are one of the at risk populations targeted by the new clinic. This clinic is reaching a population in need of WIC benefits.
- A total of 127,845 participants received WIC food instruments during the year. The participation caseload was composed of three categories: women (pregnant, breastfeeding or postpartum), infants (birth to one year), and children (one to five years). Participation caseload averaged 10,649 per month out of a monthly enrollment of 12,780. According to the average participation an estimation of \$9,414,887 WIC food dollars were spent in Mobile County during the year.
- A total of 874 patients received individualized dietary counseling. These sessions included diabetic instruction, hypertension care plans, weight management and HIV nutrition assessments and follow-ups. Nutritional supplements, as ordered by the physicians were given to the HIV patients.
- The Office of Nutrition Services provided newsletters to participants of the Food Stamp Program through a partnership with the Mobile Area Food Stamp Offices. The fact sheets were developed, printed and distributed to the Mobile and Prichard Food Stamp Offices. Classes were scheduled in both sites and the staff distributed additional educational materials. Mobile Housing Board Units and Mobile Community Action sites were also used to reach food stamp participants in various sites in the community.
- WIC evacuees from Louisiana and Mississippi were enrolled in Mobile County for a three month period post Hurricane Katrina. The WIC program allowed Alabama grocery

HOME HEALTH SERVICES*

PROGRAM	TOTAL PATIENTS **	TOTAL VISITS	SKILLED NURSING
Medicare	40	1,290	462
Medicaid	114	6,020	802
Indigent	2	87	5
Private Ins. Options	4	370	5
TOTAL	160	7,767	1,274

*Numbers are for fiscal year, 2004-2005.
 **Total Unduplicated Patients.

PROGRAM	HOME HEALTH AIDE	MED. S. W. *	P.T. **	NURSING NO CHARGE VISITS
Medicare	783		45	4
Medicaid	5,216	2		428
Indigent	77			5
Private Ins. Options	370			5
TOTAL	6,446	2	45	442

*MED.S.W. = Medical Social Worker.
 **P.T. = Physical Therapist.

stores to accept Louisiana food instruments. Ready-to-feed infant formula was available to evacuees who needed assistance.

- The Family Planning Care Coordination program assessed 851 “Plan First” patients for risk factors for unintended pregnancy. Over 160 patients were assisted in applying for Plan First Medicaid and services were provided to more than 1421 patients determined to be high risk for an unintended pregnancy. The patients were assisted in compliance with their chosen birth control method through reinforcement of information given to them by their provider, reminders of appointments, assisting with transportation, and other psychosocial issues. These services were provided to allow the patient to be successful with their chosen birth control method and therefore reduce the unintended pregnancy rate of the community. Family planning services case management was provided for the first time for women with full Medicaid.
- All Medicaid children are eligible for the Patient First Children’s Care Coordination Program up to their 21st birthday. Services were provided to 1296 patients.
- In February 2005, the Medicaid Patient First Adult program was initiated to provide case management services to adults who were enrolled into the Patient First Program. Under this program services were provided to 65 patients. Patients were assessed for unmet needs and services were provided to assist them with transportation, referrals to outside agencies and appointment referrals.
- Two hundred and two patients were served through the community-based Elderly and Disabled Waiver Program, which offers assistances to patients who meet nursing home criteria but prefer to remain in the home.
- Mobile Home Health Services staff provided 7769 home visits to approximately 156 unduplicated clients residing in Mobile and Baldwin County during the fiscal year 2004/2005. Home health care was provided through the services of skilled nurses, certified home health aides, medical social workers, and physical therapist.

Family Health Clinical Services

Supported by federal, state and local sources of funding, Family Health Clinical Services was able to provide medical, dental, and support services to county residents. Primary health services were offered at seven sites located in medically underserved areas in Mobile County.

- A total of 18,261 patient encounters were recorded for the Adult Clinic, a 12% increase over the previous year.
- After receiving additional grant funding in 2004, the Adult Clinic was able to expand services to adults who are uninsured and underinsured.
- A total of 516 HIV infected persons received direct primary health care through the program in 2005. The HIV EIS Program realized no significant shift in the new users and experienced a 10% increase in total users in 2005. All HIV related medications were provided at no cost to patients. Additional collaborative support was provided to the program through ongoing contracts with Catholic Social Services, Mobile Mental Health and the University of South Alabama Division of Infectious Disease.
- The Dental Clinic realized a small decline patient encounters and new users. The Clinic recorded 8,387 encounters. A total of 315 sealants were placed. The slight decline was attributed to the relocation of one FTE dentist during the year.
- Approximately 5,274 medical visits were recorded for the Calcedaever Clinic, located on the MOWA Indian reservation.
- The Citronelle Clinic, located in North Mobile town of Citronelle, provided 4,921 medical visits to patients.
- The Semmes Clinic held its grand opening in November of 2005. This new clinic provided another subset of Mobile County residents with access to health services. Located in the Northwest Mobile town of Semmes, this clinic provided over 2,700 patient visits during 2005.
- Approximately 2,239 Early & Periodic Screening, Diagnosis & Treatment (EPSDT) visits were recorded for the downtown Pediatric Clinic during 2005, with services provided for 7,417 pediatric patients.
- The Newburn Clinic, located in the TEEN Center, provided care to 2,982 patients during the year.
- The Saturday Clinic provided services to approximately 933 patients. The service hours were from 8 a.m. to noon. A full range of services were offered including internal medicine, pediatrics, immunizations, WIC, family planning, dental and laboratory.
- There were approximately 5,024 recorded patient visits to the Eight Mile Clinic. Included in that number was over 1,500 EPSDT visits for the same time period.
- Co-located at the Mobile County Training School Middle School in the Plateau Community, the school based clinic provided year round

medical, dental, counseling, case management and health education services to a student population of 393 during 2005. Medical services provided more than 462 students. Approximately 1,702 clinic encounters were recorded. Two hundred and fifty-six students accessed the dental services provided one day a week by a part-time dentist. A contractual relationship with a community social service agency allowed 144 students to access counseling services at the school based-clinic. A full-time Social Service Worker completed psychosocial assessments on over 157 students and assisted 56 in determining their eligibility for ALL Kids, Alabama's S-CHIP Program.

- Diagnostic testing was performed on site, and phlebotomy services were provided for tests sent to a reference laboratory and to the Alabama Department of Public Health laboratories. These activities led to a combined total of over 300,000 determinations.
- The Pharmacy supplied prescription medications to Health Department patients at all clinical sites as well as the main facility downtown. As a federally funded health care agency, the Mobile County Health Department received all dispensed medicines at a discounted rate. These price discounts were passed on to the patients utilizing the Pharmacy services. A total of over 70,000 prescriptions were filled during 2005.
- Central Appointments staff answered over 100,000 calls during the calendar year. The open access appointment model which allows for same day or next day appointments has resulted in a 50% to 80% increase in patient show rates in the clinics.